

PART I  
SOUTH KOREA

Secret

From: 261200/I Dec. 47  
To : 021200/I Jan. 48

Headquarters, USAFIK  
Seoul, Korea  
06 January, 1948

No. 123

Maps: KOREA, 1/250,000  
East ASIA, 1/1,000,000

1. ARMED FORCES

A. STRENGTH

The strength of the "armed forces" of South KOREA is as follows:

Police - 30,000, including 500 policewomen and 2,100 railroad police;  
Constabulary - 16,500; and  
Coast Guard - 2,900

The constabulary, headed by SONG Ho Seung, are disposed on a basis of one regiment per province, with regimental strengths at present varying from 1,150 to 2,300 men, and a reduced-size regiment of 260 men on the island of CHEJU-DO.

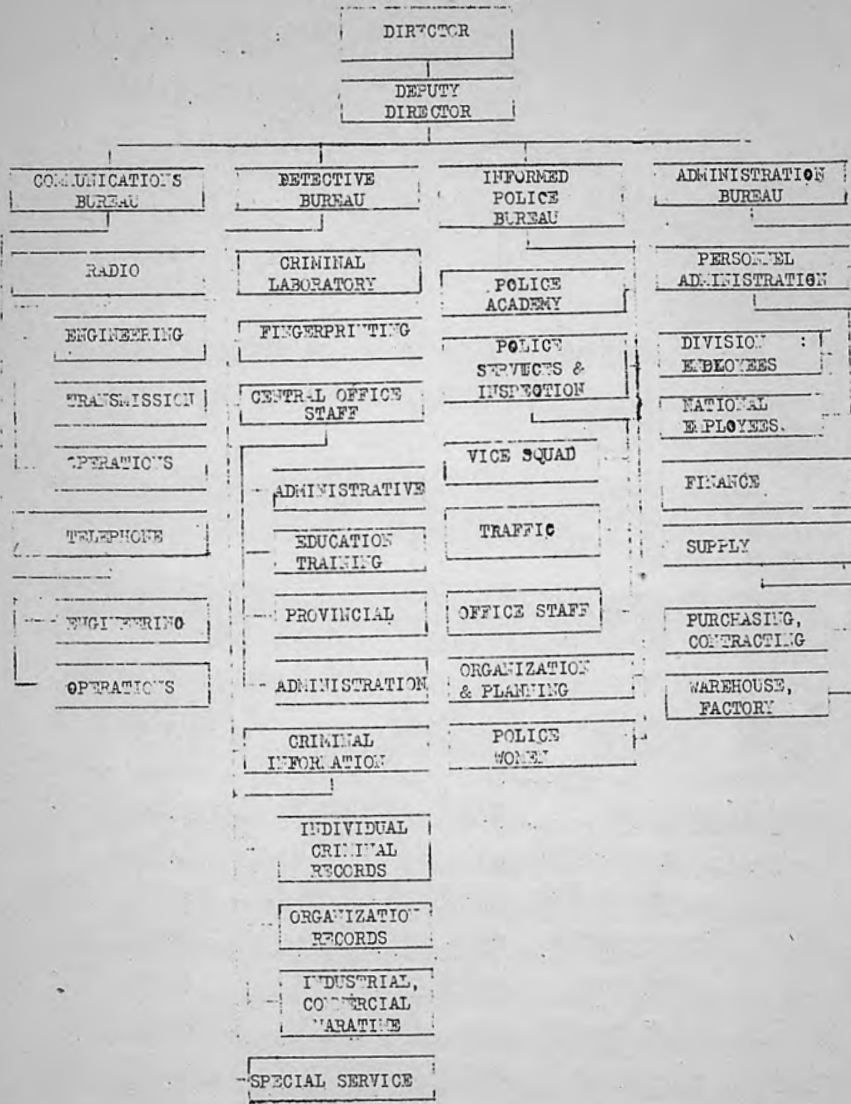
The Coast Guard, headed by SON Won Il, has bases at INCHON, KUNSAN, HONGDO, YOSU, PUSAN, POHANG, and MUKHOGIN. The service force installation is at CHINHAI. A merchant marine academy is located at KUNSAN.

As of 01 December 1947, police forces were disposed as follows:

<u>DIVISION</u>	<u>LOCATION</u>	<u>HEADQUARTERS</u>	<u>STRENGTH</u>
A	KYONGGI DO	INCHON (960-1630)	3,629
B	KANGWON DO	CHUNCHON (1060-1680)	2,017
C	CHUNGCHONG-NAMDO	TAEJON (1040-1490)	2,393
D	CHUNGCHONG-PUKTO	CHONGJU (1040-1530)	1,479
E	KYONGSANG-PUKTO	TAEGU (1150-1430)	3,555
F	CHOLLA-PUKTO	CHONJU (1010-1430)	2,424
G	KYONGSANG-NAMDO	PUSAN (1200-1340)	3,368
H	CHOLLA-NAMDO	KWANGJU (990-1350)	3,323
M	SEOUL	SEOUL (1000-1640)	5,039
CHEJU	CHEJU-DO	CHEJU (950-1150)	465

On 01 January the police had 171 district stations and 1,549 sub-stations. Police have mobile patrols equipped with two-way radio sets. Radio communication facilities, although in need of repairs, are adequate. (See following charts.)

DEPARTMENT OF POLICE  
 SYIC 01 JANUARY 1948



DECLASSIFIED  
 Authority *MND 745070*

